

## Energi Savr Node™

A versatile, energy saving lighting control solution  
that is easy to install and easy to expand



# INTRODUCING ENERGI SAVR NODE

## WHAT IS ENERGI SAVR NODE™?

**Energi Savr Node is a simple, programmable solution for controlling light and saving energy in any commercial space. Use Energi Savr Node to connect DALI (digitally addressable lighting interface), 0-10 V or switching ballasts to wired or wireless occupancy sensors, daylight sensors, and controls for total light control.**



Photography © Nic Lehoux



Photography © Nic Lehoux



## WHAT ARE THE BENEFITS?

### **EASY TO INSTALL AND MAINTAIN**

- Easy and intuitive system programming application designed for the Apple iPhone or iPod touch mobile digital devices <sup>1</sup>
- For simple applications, preconfigured modes reduce installation time and eliminate system programming
- Automatic ballast replacement eliminates the need for system reprogramming when replacing ballasts (feature available only on DALI version)
- Wireless sensors and controls can be easily retrofit with no need for rewiring

### **EXPANDABLE**

- Control a single space, up to an entire floor with one module and add additional Energi Savr Node modules to control multiple floors
- Modules can link with Quantum® for total light management throughout an entire building

### **VERSATILE**

- DALI ballast control offers flexibility for reconfiguring frequently changing spaces (feature available only on DALI version)
- Great for retrofit solutions or new construction—install each module locally—no need to connect to a central panel

### **ENERGY-SAVING AND ENVIRONMENTALLY FRIENDLY**

- Reduce lighting energy use with dimming, occupancy sensing, and daylight harvesting

# LUTRON'S NEW MODULAR APPROACH TO LIGHTING CONTROL SYSTEMS

## KEY FEATURES

### 1 QS link

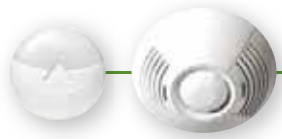
connects to wallstations, other QS devices, and Quantum® to easily expand from a single space to an entire building

**NEW! QS sensor module works with wireless occupancy sensors, daylight sensors and Pico controls**



### 6 Sensor connection

links to occupancy and daylight sensors for automatic energy savings



### 5 DIN rail mountable

back of Energi Savr Node easily snaps to DIN rail



Energi Savr Node DALI

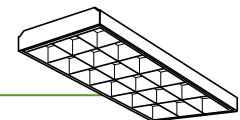
### 2 Programming port

links to Apple iPhone or iPod touch mobile digital devices for system programming <sup>1</sup> (via wi-fi router by others)



### 3 Ballast connection

to DALI, 0-10 V or switching ballasts <sup>2</sup> (DALI model shown)



### 4 Front panel

simplifies installation, troubleshooting, and diagnostics:

- LEDs provide a simple way to confirm each connection
- Test button quickly confirms that fixtures are wired correctly and that ballasts communicate properly
- Easily assign wallstations to zones or loops at the touch of a button

<sup>1</sup> Apple and iPod are registered trademarks and iPhone is a trademark of Apple, Inc., registered in the U.S. and other countries.

<sup>2</sup> See back cover to determine which Energi Savr Node model best fits your application.

# TYPICAL APPLICATION: OFFICE FLOOR



**A** **NEW Radio Powr Savr™**  
**Wireless Occupancy sensors**

save energy and increase convenience by automatically turning lights on and off based on space occupancy



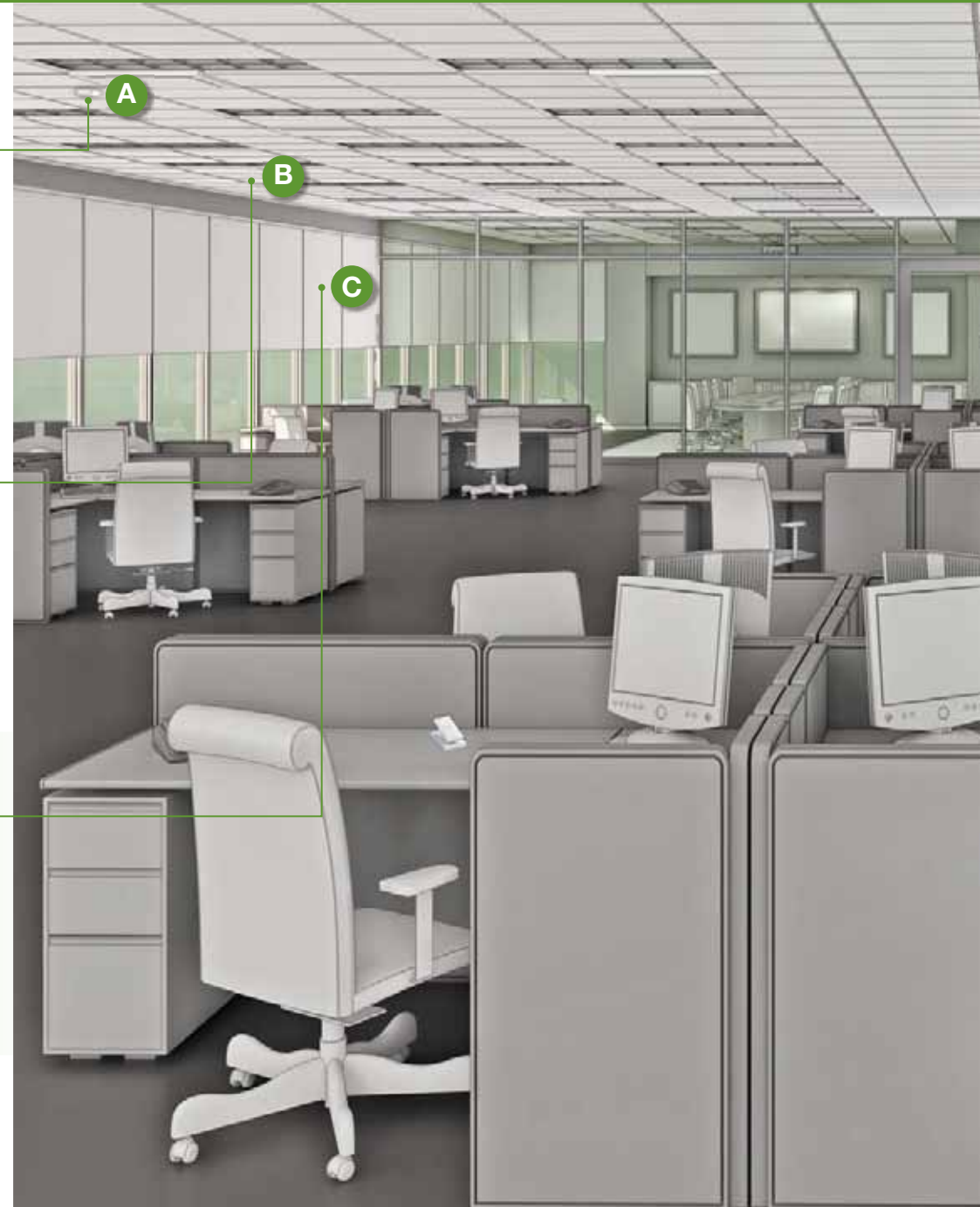
**B** **NEW Radio Powr Savr™**  
**Wireless Daylight sensors**

save energy by automatically adjusting the light levels based on the amount of daylight entering a space



**C** **Complementary solution**  
**Sivoia™ QS window blinds**

control blinds with precision and elegance to reduce sun glare and solar heat gain for increased productivity, comfort, and energy savings





D

D

**Energi Savr Node™\***

control light by connecting occupancy sensors, daylight sensors and wallstations to DALI, 0-10V or switching ballasts

\*See page 11 to determine which Energi Savr Node model best fits your application.



E

E

**seeTouch® QS wallstation**

adjust lights and blinds to achieve the optimal light level for any task



F

F

**Pico™ Wireless Controller**

adjust light level from anywhere in your space for enhanced productivity, comfort, and convenience (available as free standing, wall mounted or on a table stand)



# SYSTEM PROGRAMMING

## IN THE PALM OF YOUR HAND

The Energi Savr Node programming application for Apple iPhone or iPod touch mobile digital devices is the key to an intelligent light and blinds control system. <sup>1</sup>

- Adjust ballasts to the needs of any space
- Define light level
- Adjust sensor and control preferences
- Create groups
- Adjust multiple settings on every ballast

**Use the Energi Savr Node programming application to setup, fine-tune, and maintain Energi Savr Node.**

### NEW! SYSTEM BACKUP

The iPod application can be used to save all configuration settings in the system. In the event that a Energi Savr Node module is replaced, all system settings and configuration can be automatically restored.



### System setup

- Easy, menu-driven commissioning process
- Commission the lights from anywhere in the space

Define areas by setting up occupancy sensors, daylight sensors, and wallstations.



### Fine-tuning

- Easily make changes to the system after the space is occupied

Change how the lights behave when the space is occupied and unoccupied and adjust the amount of time it takes for the lights to turn off after the last person exits the area.



### Maintenance

- Seamlessly replace digital ballasts without reprogramming the entire system

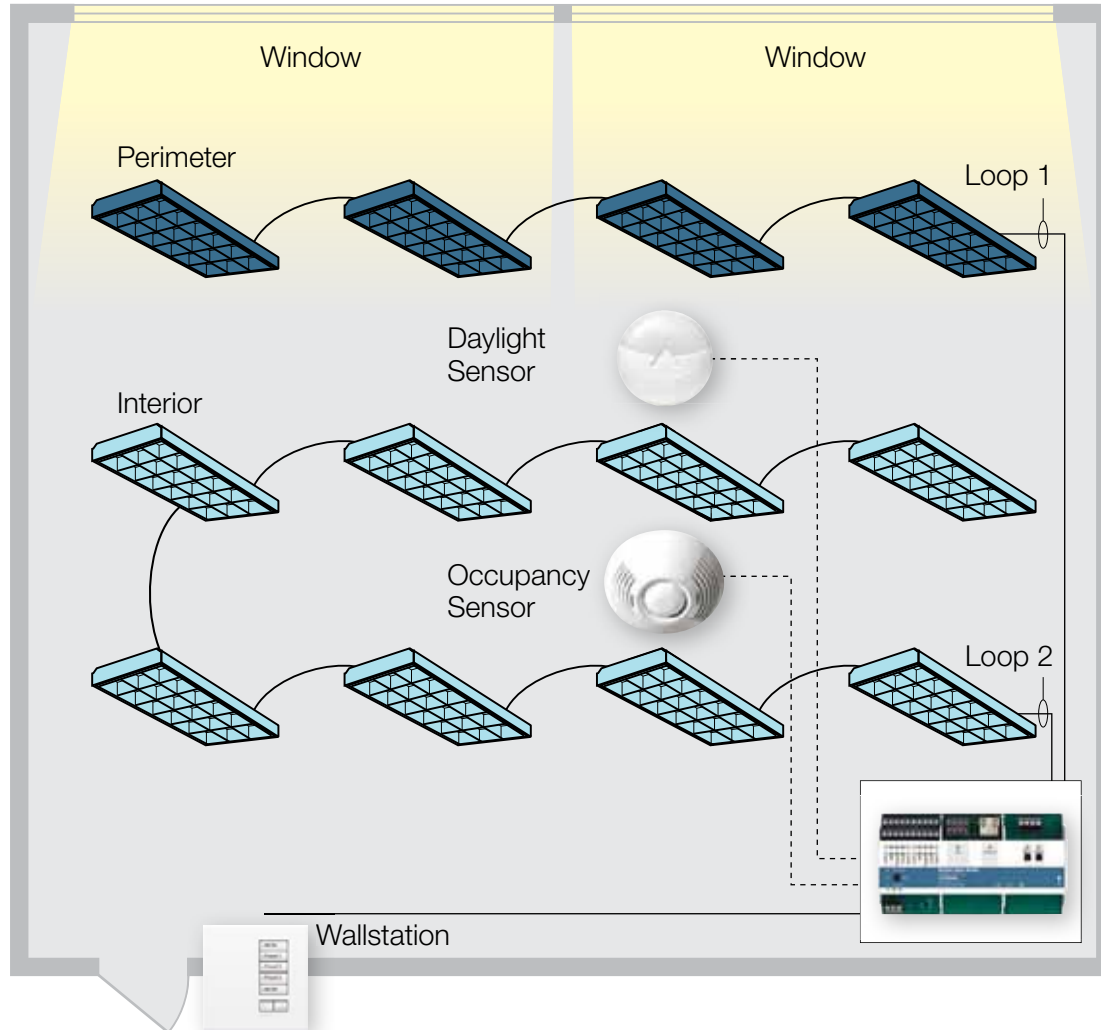
Programming application automatically finds new ballasts in the system and prompts the user through a few simple steps to complete ballast replacement.

<sup>1</sup> Apple and iPod are registered trademarks and iPhone is a trademark of Apple, Inc., registered in the U.S. and other countries.

# PRECONFIGURED MODES FOR EASY INSTALLATION (NO COMMISSIONING REQUIRED)

## DAYLIGHT SENSING

### Pre-configured mode 1



Pre-configured mode 1 implements a typical daylighting scenario. Fixtures automatically adjust their light level based on the amount of available daylight. To maintain a consistent light level, fixtures closest to the windows dim more than interior fixtures located further from the windows.

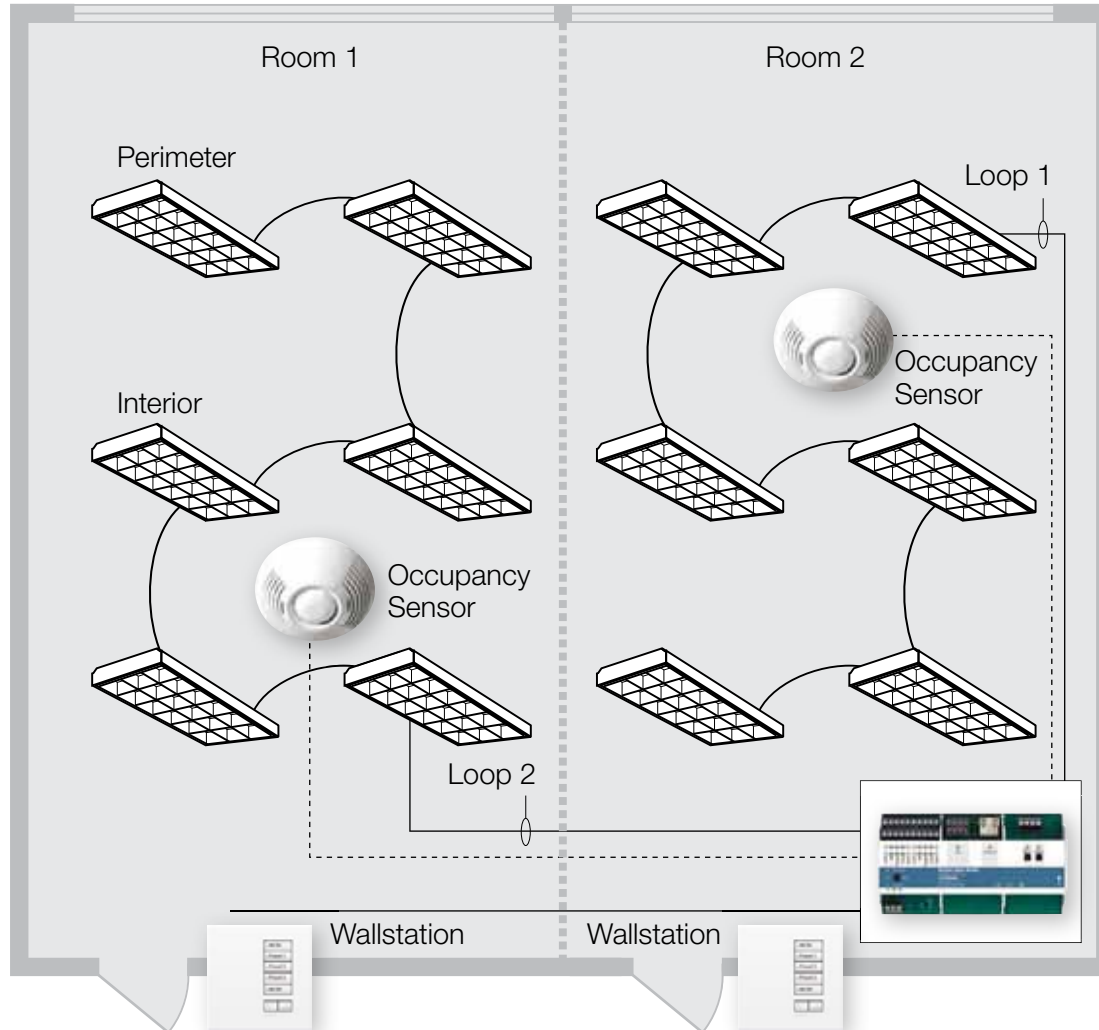
Light levels\*  50%  80%

\* example only – system calculates light level percentages for each fixture based on the amount of sunlight available



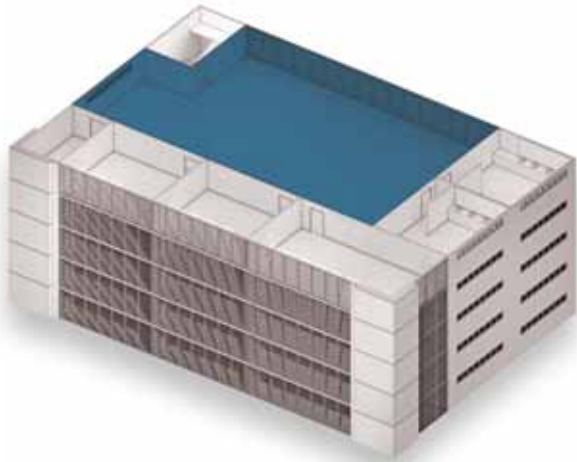
## 2-ZONE OCCUPANCY SENSING

### Pre-configured mode 2

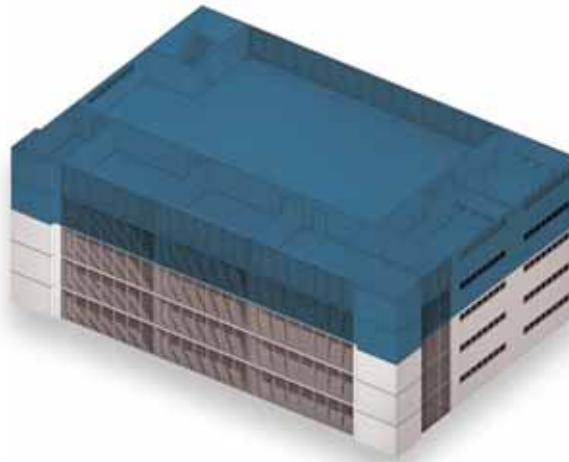


Pre-configured mode 2 shows two independently controlled areas. Each room is controlled by an occupancy sensor, turning lights on and off based on room occupancy. Simply connect sensors, wallstations, and fixtures to Energi Savr Node so space functions as shown without commissioning.

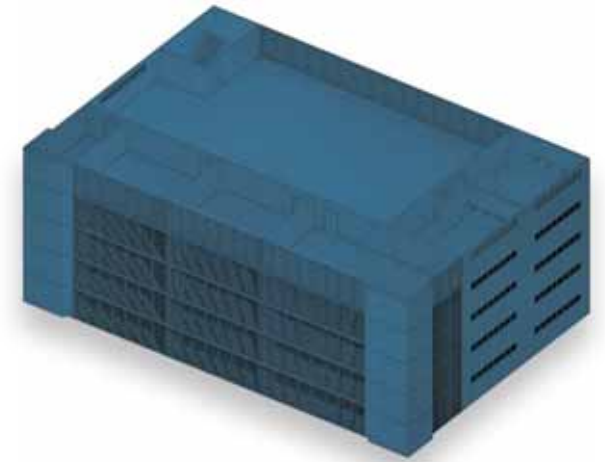
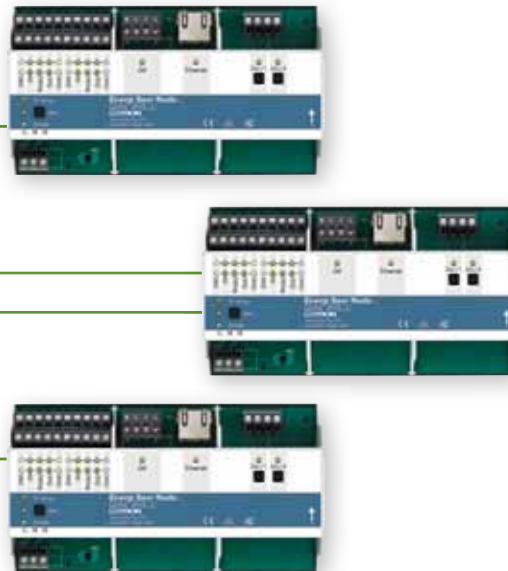
# ENERGI SAVR NODE™ IS COMPLETELY EXPANDABLE



**1** Start with a single area system



**2** Link several Energi Savr Node modules to allow integrated control of several areas or floors

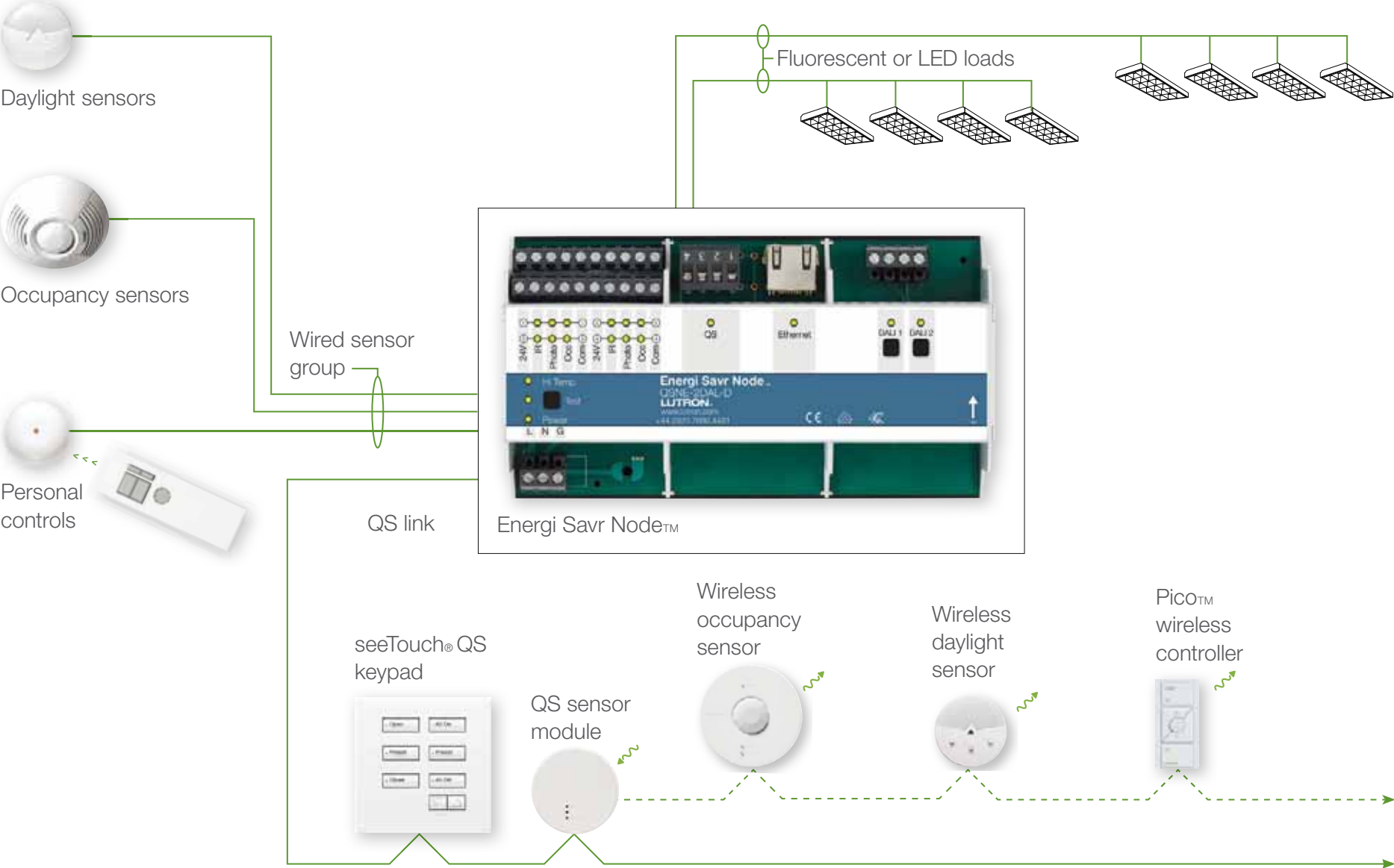


**3** Add Quantum® for whole-building light management



Quantum is a centralised control system that allows facility managers to utilise electric light and daylight for maximum energy efficiency, comfort, and productivity. Easily configure, monitor, analyse, and report on the light throughout an entire building from one location.

# SYSTEM DIAGRAM



# ORDERING INFORMATION

## ENERGI SAVR NODE

QSNE-2DAL-D	DALI, 220-240 V, 2 loops with 64 ballasts each
QSNE-4S10-D	switching, 220-240 V, 4 switch outputs
QSNE-4T10-D	0-10 V, 220-240 V, 4 switch outputs and 4 0-10 V channels

## QS SENSOR MODULE

QSM3-4W-C	QS link Interface for up to 30 wireless and 4 wired sensors and controls
-----------	--



FREEPHONE (UK): 0800 282 107 | Customer Service: +44 (0)20 7702 0657  
Technical Support: +44 (0)20 7680 4481 | [www.lutron.com/europe](http://www.lutron.com/europe) | [lutronlondon@lutron.com](mailto:lutronlondon@lutron.com)  
© 06/2011 Lutron Electronics Co., Inc. | P/N 367-1604/EA

